

SUGGESTED INDICATOR PRESENTATION FORMATS

Appendix 6

It is recommended that the basic information constituting the indicators be presented in a simple table similar to that shown in figure A6.1 below. Figures should not be shown to any more than one decimal place. Where values have been calculated from samples, this can also be marked and confidence limits provided (see Appendix 2 for guidance on the calculation of confidence limits). Note that the values below are given by way of example only.

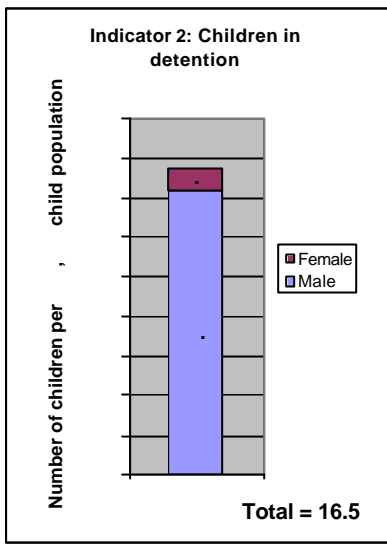
Figure A6.1 – Example indicator summary table

Indicator		Example value
Quantitative Indicators		
1	Children in conflict with the law	▪ 12.6 children arrested during a 12 month period per 100,000 child population
2	Children in detention	▪ 16.5 children in detention per 100,000 child population
3	Children in pre-sentence detention	▪ 11.1 children in pre-sentence detention per 100,000 child population
4	Duration of pre-sentence detention	<ul style="list-style-type: none"> ▪ < 1 month 14% ▪ 1 month to < 3 months 35% ▪ 3 months to < 6 months 40% ▪ 6 months to < 12 months 10% ▪ 12 months to < 24 months 1% ▪ 24 months to < 60 months 0% ▪ > 60 months 0%
5	Duration of sentenced detention	<ul style="list-style-type: none"> ▪ < 1 month 5% ▪ 1 month to < 3 months 10% ▪ 3 months to < 6 months 23% ▪ 6 months to < 12 months 60% ▪ 12 months to < 24 months 1% ▪ 24 months to < 60 months 1% ▪ > 60 months 0%
6	Child deaths in detention	▪ 5 child deaths in detention during a 12 month period, per 1,000 children detained
7	Separation from adults	▪ 25% of children in detention not wholly separated from adults
8	Contacts with parents and family	▪ 10% of children have been visited by, or visited, parents, guardian or an adult family member in the last 3 months
9	Custodial sentencing	▪ 37% percent of children receive a custodial sentence
10	Pre-sentence diversion	▪ 8% percent of children diverted or sentenced enter a pre-sentence diversion scheme
11	Aftercare	▪ 22% percent of children released from detention receive aftercare
Policy/Implementation Indicators		
12	Regular independent inspections	▪ Level 2
13	Complaints mechanism	▪ Level 2
14	Specialised juvenile justice system	▪ Level 3
15	Prevention	▪ Level 1

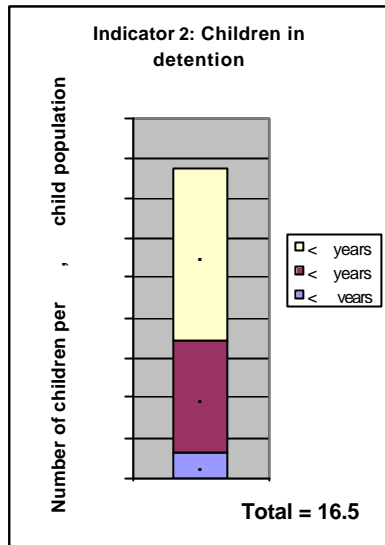
Where disaggregated information has also been collected and measured, this can be presented for each indicator in the form of a bar-chart or pie chart. Figure A6.2 below provides suggested disaggregation presentation formats for each indicator.

Figure A6.2 – Example disaggregation display formats

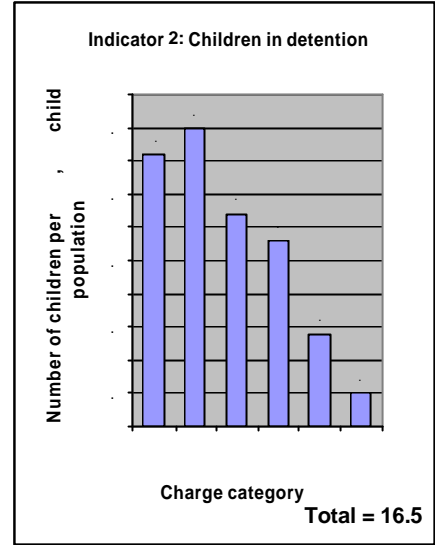
INDICATORS 1, 2 and 3: Example shown for Indicator 2



Indicator 2 disaggregated by Gender

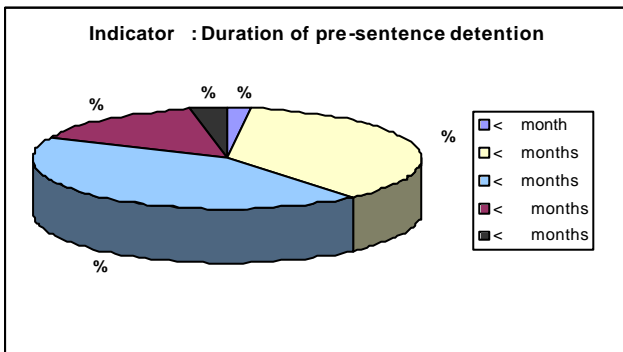


Indicator 2 disaggregated by Age

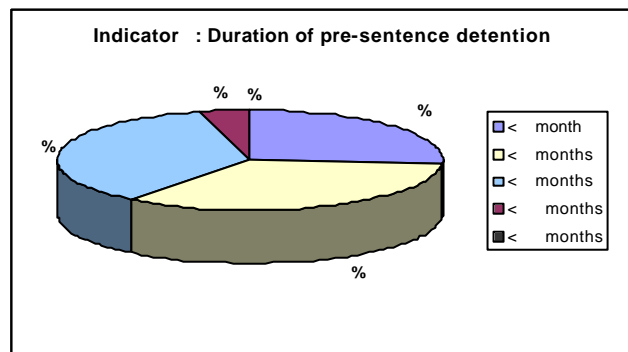


Indicator 2 disaggregated by Category of Charge

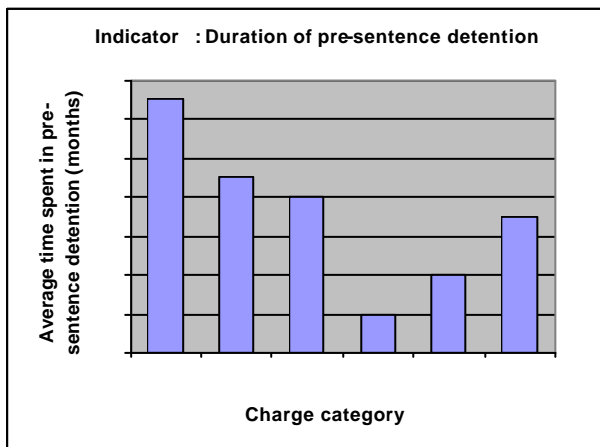
INDICATORS 4 and 5: Example shown for Indicator 4



Indicator 4: Duration shown for male children



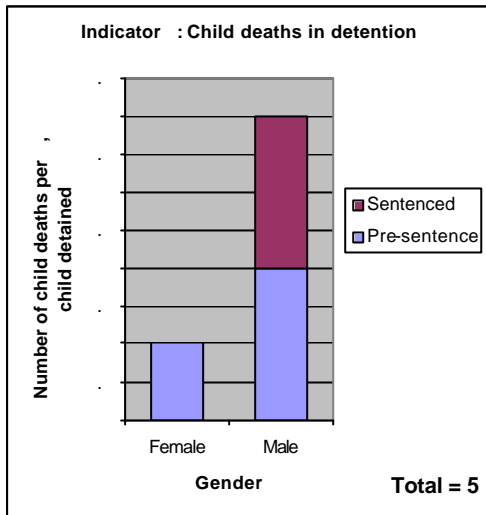
Indicator 4: Duration shown for female children



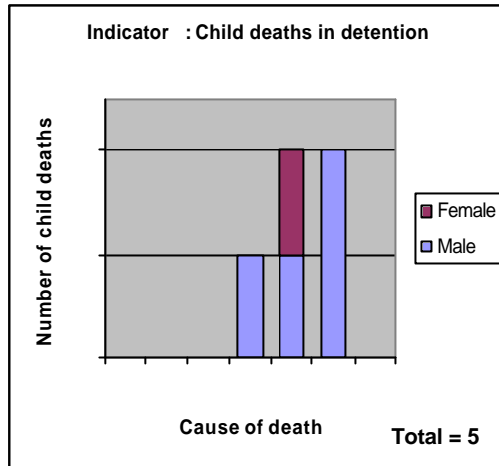
- 1 Serious offence against a person
- 2 Serious property offence
- 3 Theft
- 4 Public disorder offence
- 5 Drug or substance offence
- 6 Political offence
- 7 Immigration offence
- 8 Status offence
- 9 Other
- 10 'At risk of delinquency'
- 11 'Irregular situation'

Indicator 4: Average duration shown by Category of Charge

INDICATOR 6



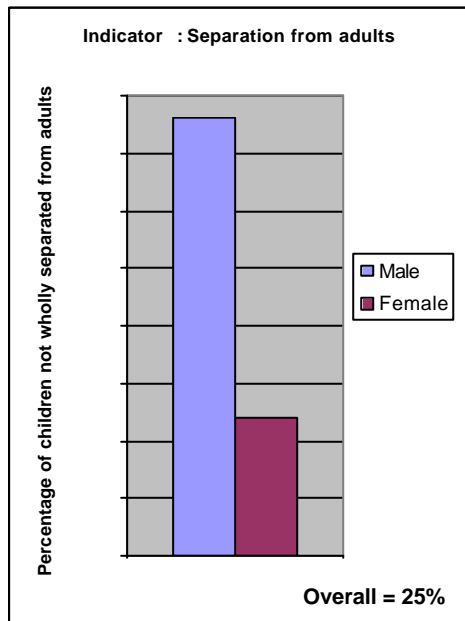
Indicator 6: Child deaths, disaggregated by gender and type of detention



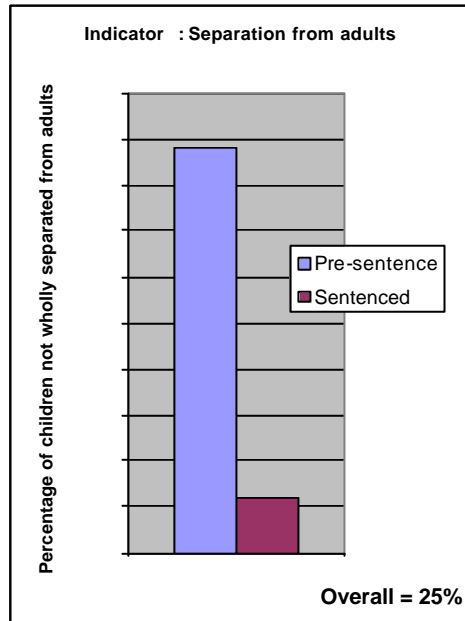
Indicator 6: Child deaths, disaggregated by gender and cause of death

- 1 Murder
- 2 Suicide
- 3 Alcohol/drug intoxication
- 4 Accidental death
- 5 Illness or infection
- 6 HIV/AIDS related
- 7 Other

INDICATORS 7 and 8: Example shown for Indicator 7

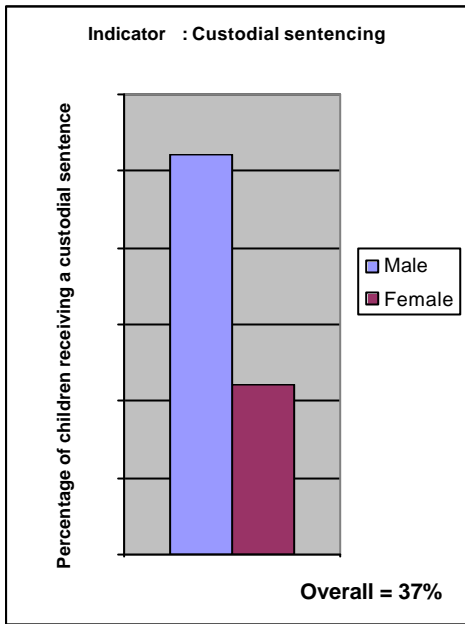


Indicator 7: Children not wholly separated from adults, disaggregated by gender

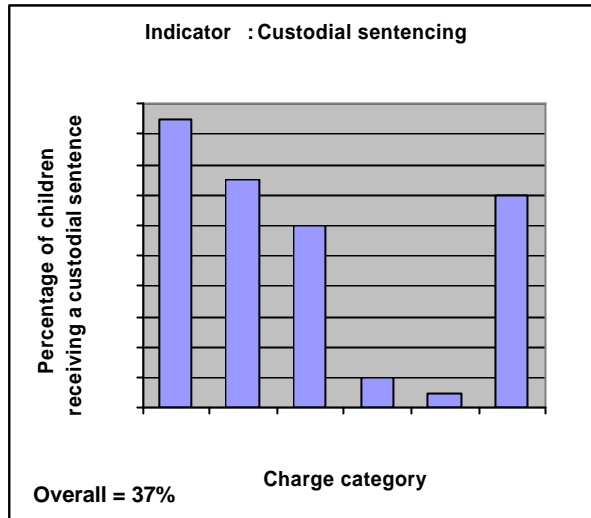


Indicator 6: Children not wholly separated from adults, disaggregated by type of detention

INDICATORS 9 and 10: Example shown for Indicator 9



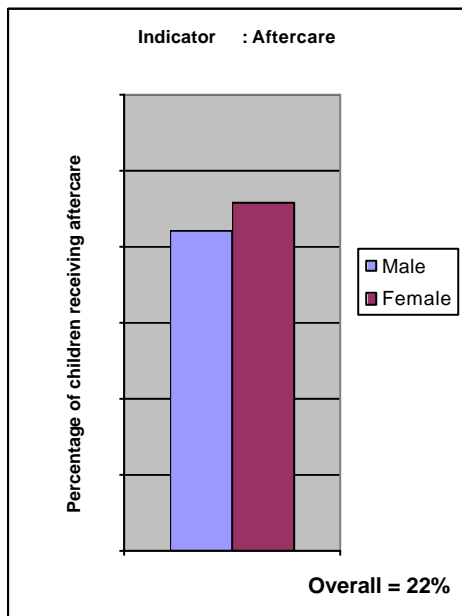
Indicator 9: Percentage of children receiving custodial sentences, disaggregated by gender



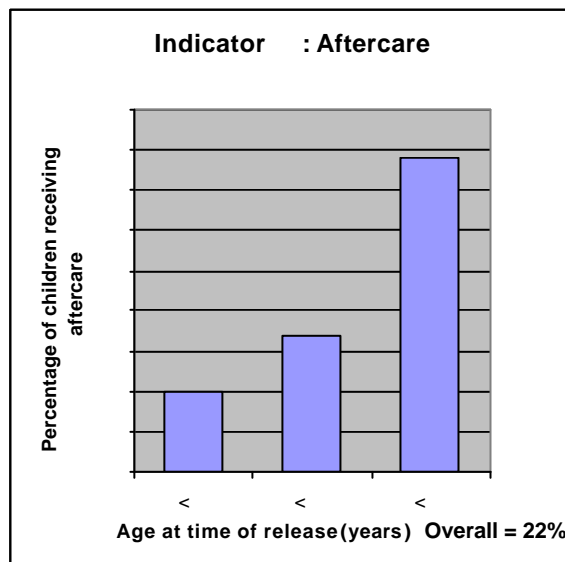
Indicator 9: Percentage of children receiving custodial sentences, disaggregated by category of charge

- 1 Serious offence against a person
- 2 Serious property offence
- 3 Theft
- 4 Public disorder offence
- 5 Drug or substance offence
- 6 Political offence
- 7 Immigration offence
- 8 Status offence
- 9 Other
- 10 'At risk of delinquency'
- 11 'Irregular situation'

INDICATOR 11



Indicator 11: Percentage of children receiving aftercare disaggregated by gender



Indicator 11: Percentage of children receiving aftercare disaggregated by age at time of release